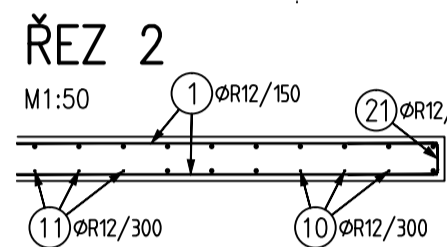
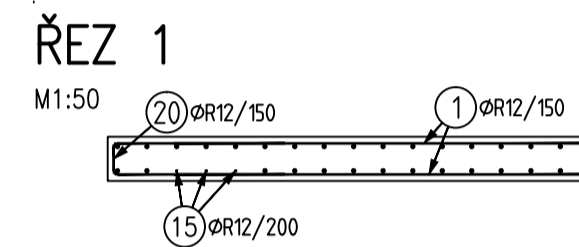


M1:50
(NEJDE O ROZVINUTÝ POHLED STĚNY, ALE O PRŮMĚT)



M1:50
(NEJDE O ROZVINUTÝ POHLED STĚNY, ALE O PRŮMĚT)

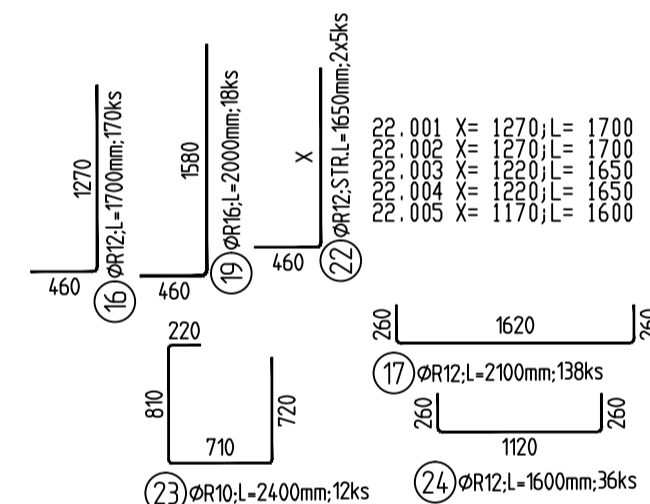
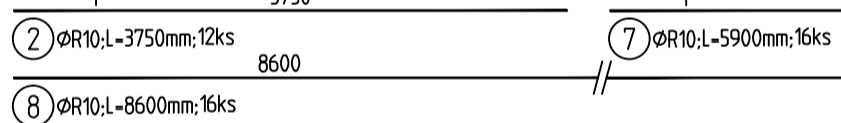
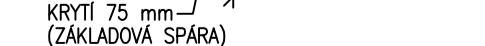


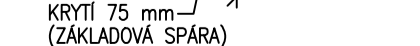
Diagram illustrating the cross-section of a tunnel structure, showing the internal lining and the surrounding ground. The structure is labeled with the following components:

- ZÁKLAD** (Foundation)
- HORNÍ ÚROVEŇ STĚNY** (Upper level of the wall)
- SPODNÍ ÚROVEŇ STĚNY** (Lower level of the wall)

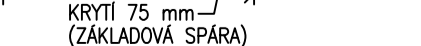
M1:50, (ŘEZ CCA 0,5 m PŘED OSOU F)



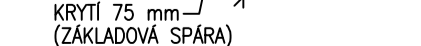
M1:50



M1:50



M1:50 1/30 mm



M1:50



6000

① $\varnothing R12,1-6000\text{mm}; 70\text{ks}$ 2600

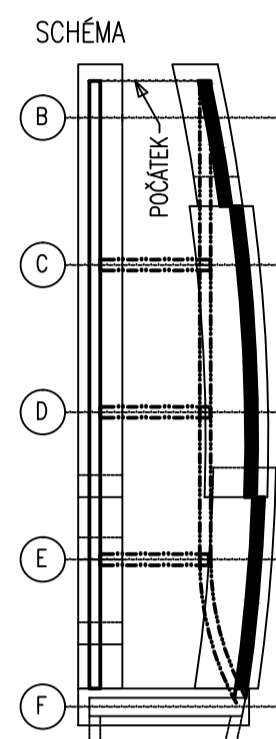
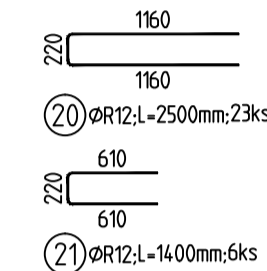
③ $\varnothing R12,1-2600\text{mm}; 8\text{ks}$ 5000

④ $\varnothing R12,1-5000\text{mm}; 20\text{ks}$ 4300

⑤ $\varnothing R12,1-4300\text{mm}; 10\text{ks}$ 4700

⑥ $\varnothing R12,1-4700\text{mm}; 8\text{ks}$

<p>10) ØR12: L=2100mm, 44s</p> <p>X 190</p> <p>X</p> <p>10.001 X= 930 1 2000</p> <p>10.002 X= 950 1 2000</p> <p>10.003 X= 970 1 2000</p> <p>10.004 X= 1030 1 2000</p> <p>10.005 X= 1050 1 2000</p> <p>10.006 X= 1070 1 2000</p> <p>10.007 X= 1090 1 2000</p> <p>10.008 X= 1110 1 2000</p> <p>10.009 X= 1130 1 2000</p> <p>10.010 X= 1150 1 2000</p> <p>10.011 X= 1170 1 2000</p> <p>10.012 X= 1190 1 2000</p> <p>10.013 X= 1210 1 2000</p> <p>10.014 X= 1230 1 2000</p> <p>10.015 X= 1250 1 2000</p> <p>10.016 X= 1270 1 2000</p> <p>10.017 X= 1290 1 2000</p> <p>10.018 X= 1310 1 2000</p> <p>10.019 X= 1330 1 2000</p> <p>10.020 X= 1350 1 2000</p> <p>10.021 X= 1370 1 2000</p> <p>10.022 X= 1390 1 2000</p> <p>10.023 X= 1410 1 2000</p> <p>10.024 X= 1430 1 2000</p> <p>10.025 X= 1450 1 2000</p> <p>10.026 X= 1470 1 2000</p> <p>10.027 X= 1490 1 2000</p> <p>10.028 X= 1510 1 2000</p> <p>10.029 X= 1530 1 2000</p> <p>10.030 X= 1550 1 2000</p> <p>10.031 X= 1570 1 2000</p> <p>10.032 X= 1590 1 2000</p> <p>10.033 X= 1610 1 2000</p> <p>10.034 X= 1630 1 2000</p> <p>10.035 X= 1650 1 2000</p> <p>10.036 X= 1670 1 2000</p> <p>10.037 X= 1690 1 2000</p> <p>10.038 X= 1710 1 2000</p> <p>10.039 X= 1730 1 2000</p> <p>10.040 X= 1750 1 2000</p> <p>10.041 X= 1770 1 2000</p> <p>10.042 X= 1790 1 2000</p> <p>10.043 X= 1810 1 2000</p> <p>10.044 X= 1830 1 2000</p> <p>10.045 X= 1850 1 2000</p> <p>10.046 X= 1870 1 2000</p> <p>10.047 X= 1890 1 2000</p> <p>10.048 X= 1910 1 2000</p> <p>10.049 X= 1930 1 2000</p> <p>10.050 X= 1950 1 2000</p> <p>10.051 X= 1970 1 2000</p> <p>10.052 X= 1990 1 2000</p> <p>10.053 X= 2010 1 2000</p> <p>10.054 X= 2030 1 2000</p> <p>10.055 X= 2050 1 2000</p> <p>10.056 X= 2070 1 2000</p> <p>10.057 X= 2090 1 2000</p> <p>10.058 X= 2110 1 2000</p> <p>10.059 X= 2130 1 2000</p> <p>10.060 X= 2150 1 2000</p> <p>10.061 X= 2170 1 2000</p> <p>10.062 X= 2190 1 2000</p> <p>10.063 X= 2210 1 2000</p> <p>10.064 X= 2230 1 2000</p> <p>10.065 X= 2250 1 2000</p> <p>10.066 X= 2270 1 2000</p> <p>10.067 X= 2290 1 2000</p> <p>10.068 X= 2310 1 2000</p> <p>10.069 X= 2330 1 2000</p> <p>10.070 X= 2350 1 2000</p> <p>10.071 X= 2370 1 2000</p> <p>10.072 X= 2390 1 2000</p> <p>10.073 X= 2410 1 2000</p> <p>10.074 X= 2430 1 2000</p> <p>10.075 X= 2450 1 2000</p> <p>10.076 X= 2470 1 2000</p> <p>10.077 X= 2490 1 2000</p> <p>10.078 X= 2510 1 2000</p> <p>10.079 X= 2530 1 2000</p> <p>10.080 X= 2550 1 2000</p> <p>10.081 X= 2570 1 2000</p> <p>10.082 X= 2590 1 2000</p> <p>10.083 X= 2610 1 2000</p> <p>10.084 X= 2630 1 2000</p> <p>10.085 X= 2650 1 2000</p> <p>10.086 X= 2670 1 2000</p> <p>10.087 X= 2690 1 2000</p> <p>10.088 X= 2710 1 2000</p> <p>10.089 X= 2730 1 2000</p> <p>10.090 X= 2750 1 2000</p>	<p>11) ØR12: L=2500mm, 21ks</p> <p>X 190</p> <p>X</p> <p>11.001 X= 1050 1 2250</p> <p>11.002 X= 1070 1 2250</p> <p>11.003 X= 1090 1 2250</p> <p>11.004 X= 1110 1 2250</p> <p>11.005 X= 1130 1 2250</p> <p>11.006 X= 1150 1 2250</p> <p>11.007 X= 1170 1 2250</p> <p>11.008 X= 1190 1 2250</p> <p>11.009 X= 1210 1 2250</p> <p>11.010 X= 1230 1 2250</p> <p>11.011 X= 1250 1 2250</p> <p>11.012 X= 1270 1 2250</p> <p>11.013 X= 1290 1 2250</p> <p>11.014 X= 1310 1 2250</p> <p>11.015 X= 1330 1 2250</p> <p>11.016 X= 1350 1 2250</p> <p>11.017 X= 1370 1 2250</p> <p>11.018 X= 1390 1 2250</p> <p>11.019 X= 1410 1 2250</p> <p>11.020 X= 1430 1 2250</p> <p>11.021 X= 1450 1 2250</p> <p>11.022 X= 1470 1 2250</p> <p>11.023 X= 1490 1 2250</p> <p>11.024 X= 1510 1 2250</p> <p>11.025 X= 1530 1 2250</p> <p>11.026 X= 1550 1 2250</p> <p>11.027 X= 1570 1 2250</p> <p>11.028 X= 1590 1 2250</p> <p>11.029 X= 1610 1 2250</p> <p>11.030 X= 1630 1 2250</p> <p>11.031 X= 1650 1 2250</p> <p>11.032 X= 1670 1 2250</p> <p>11.033 X= 1690 1 2250</p> <p>11.034 X= 1710 1 2250</p> <p>11.035 X= 1730 1 2250</p> <p>11.036 X= 1750 1 2250</p> <p>11.037 X= 1770 1 2250</p> <p>11.038 X= 1790 1 2250</p> <p>11.039 X= 1810 1 2250</p> <p>11.040 X= 1830 1 2250</p> <p>11.041 X= 1850 1 2250</p> <p>11.042 X= 1870 1 2250</p> <p>11.043 X= 1890 1 2250</p> <p>11.044 X= 1910 1 2250</p> <p>11.045 X= 1930 1 2250</p> <p>11.046 X= 1950 1 2250</p> <p>11.047 X= 1970 1 2250</p> <p>11.048 X= 1990 1 2250</p> <p>11.049 X= 2010 1 2250</p> <p>11.050 X= 2030 1 2250</p> <p>11.051 X= 2050 1 2250</p> <p>11.052 X= 2070 1 2250</p> <p>11.053 X= 2090 1 2250</p> <p>11.054 X= 2110 1 2250</p> <p>11.055 X= 2130 1 2250</p> <p>11.056 X= 2150 1 2250</p> <p>11.057 X= 2170 1 2250</p> <p>11.058 X= 2190 1 2250</p> <p>11.059 X= 2210 1 2250</p> <p>11.060 X= 2230 1 2250</p> <p>11.061 X= 2250 1 2250</p> <p>11.062 X= 2270 1 2250</p> <p>11.063 X= 2290 1 225</p>
---	---





- ÚHEL OHYBU KOTEVNÍCH PRUTŮ (ZE ZÁKLADŮ DO STĚN) PŘÍZPŮSOBIT TVARU STĚNY
- TVARY A DÉLKY PRUTŮ STĚN UPRAVIT NA STAVBĚ DLE SKUTEČNÉHO TVARU (PŮDORYSNÉ ZAKŘÍVENÍ, SVISLÝ NÁKLON STĚN)

OCEL: B5

KRYTÍ VÝZTUŽE: STĚNY 40 mm (POVRCHY VE STYKU S BEDNĚNÍM)
ZÁKLADY DNO 75 mm, BOKY 40 mm (BETONÁŽ NA UPRAVENOU ZEMINU)
ZÁKLADY DNO 40 mm (BETONÁŽ NA PODKLADNÍ BETON)
ZÁKLADY DNO 105 mm (BETONÁŽ NA NEUPRAVENOU ZEMINOU)

SOUŘADNICOVÝ SYSTÉM: JTSK
VÝŠKOVÝ SYSTÉM: BALT p.v.

[illegible]

<p>GENERAL PROJECTANT: GENERAL DESIGNER</p>  <p>K4 a.s.</p> <p>Kočalská 8/10, 612 00 Brno tel.: +420 541 126 611 fax.: +420 541 126 610 e-mail: brno@k4.cz</p> <p>www.k4.cz</p>	<p>JIHOMORAVSKÝ KRAJ, zastoupený Mgr. Michalem Haškem, hejtmanem Brno, Žerotínovo nám. 3/5, PSČ 601 02</p>		<p>INVESTOR: CLIENT:</p> <p>AUTORIZACE AUTHORIZED BY:</p>
	<p>JIHOMORAVSKÝ KRAJ, zastoupený Mgr. Michalem Haškem, hejtmanem Brno, Žerotínovo nám. 3/5, PSČ 601 02</p>		<p>OBJEDNATEL PROJECT MANAGER</p>
	 <p>INŽENÝRSKÁ, PROJEKČNÍ, EXPERTIZNÍ A PROVEDČÍ ČINNOSTI VE STAVEBNICTVÍ BEZDRŽOVA 17a, 602 00 BRNO I-Ž: 543 215 237</p>		<p>SUBODNATEL SUBCONTRACTOR</p> <p>ČÍSLO PARÉ DOCUMENT SET NUMBER</p>
	<p>NÁZEV AKCE: TITLE:</p> <p>MORAVIAN SCIENCE CENTRE BRNO</p>		<p>MANAŽER PROJEKTU: PROJECT MANAGER</p> <p>Ing. Jiří Heiden</p>
<p>STAVEBNÍ OBJEKT: BUILDING PART:</p> <p>SO 01 Modernizace objektu MSCB</p>	<p>ARCHITEKT: ARCHITECT:</p> <p>Ing. arch. Zdenka Němcová</p>		
	<p>HLAVNÍ INŽENÝR: CHIEF PROJECT MANAGER</p> <p>Ing. Marek Svoboda</p>		
	<p>PROJEKTANT: DESIGNER:</p> <p>Ing. Petr Štěpánek</p>		
	<p>ZAKÁZKA Č. / CONTRACT NO.:</p> <p>837</p>		<p>ODDÍL: PART:</p> <p>05</p>
<p>OBCHODNÍ SOUBOR: PACKAGE:</p> <p>F1.1.2 Stavebně konstrukční část</p>	<p>DATUM: DATE:</p> <p>únor 2011</p>		
	<p>MÉRÍTKO: SCALE:</p> <p>1:25</p>		
	<p>STUPĚN PD: PROJECT STATUS:</p> <p>KOD DOKUMENTACE: CODE</p>		<p>DSP</p> <p>F1.1.2</p>
	<p>OBSAH: CONTENT:</p> <p>OPĚRNÉ STĚNY VSTUP. RAMP, VÝZTUŽ ZAKRÍVENÉ STĚNY</p>		<p>ČÍSLO VÝKRESU: DRAWING NUMBER:</p> <p>0837_05_03_130.00</p>
		<p>REVIZE: REVISION:</p>	